

**simu** **DRY**  
Mitral

**ULTRA PORTABLE  
HEART SIMULATOR**  
FOR TRANSCATHETER  
MITRAL VALVE REPAIR

## BASIC SKILLS TARGETED TRAINING

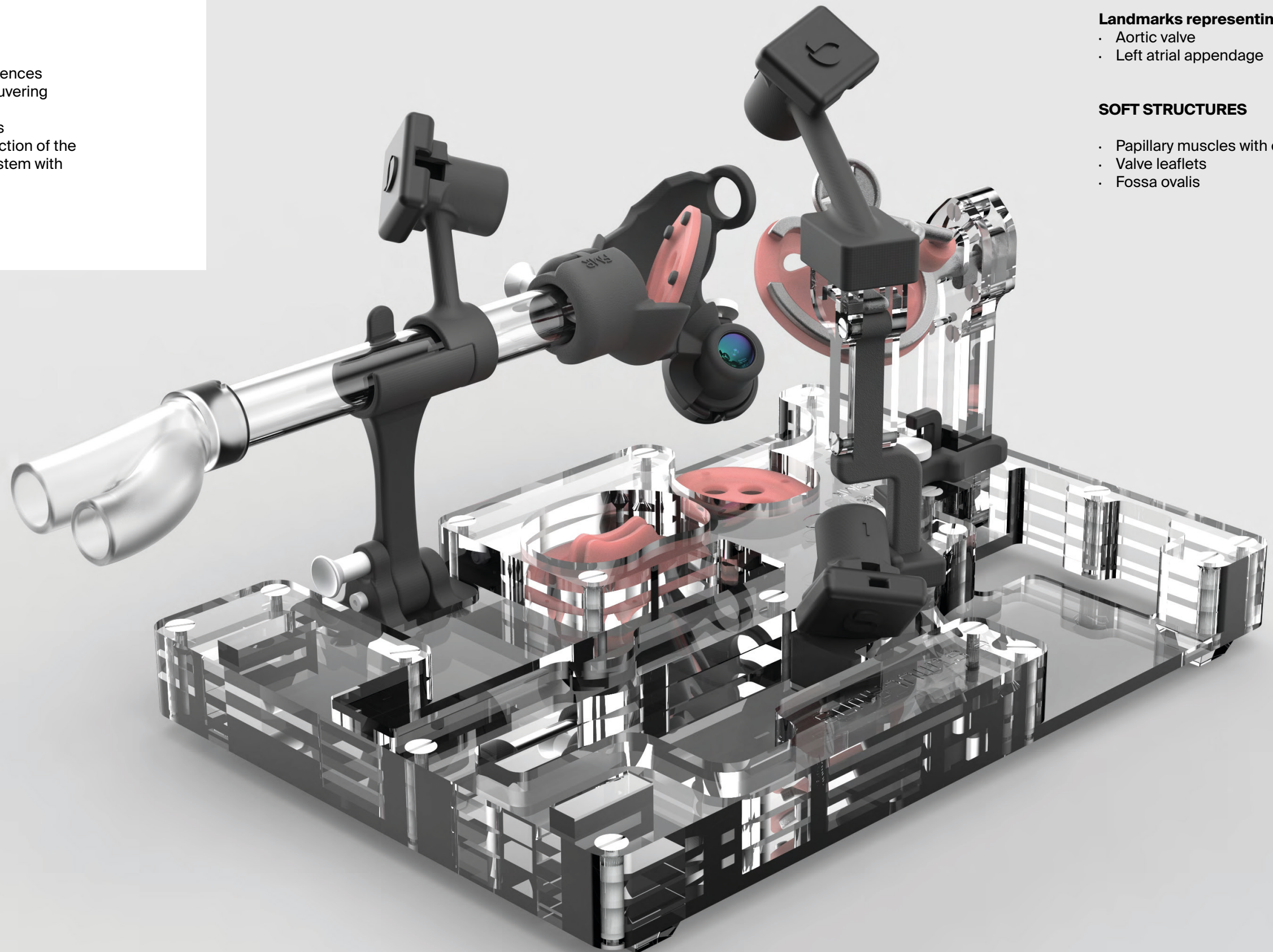
The simuDRY platform simulators  
are static and ultra portable

### FOCUS

- Device function and implant

### LEARN

- Basic anatomical references
- Delivery system maneuvering
- Implant functions
- Basic procedural steps
- Spatial targeted interaction of the device and delivery system with anatomy



### RIGID STRUCTURES

#### Replicated geometry of

- Right atrium
- Mitral annulus
- Inferior vena cava

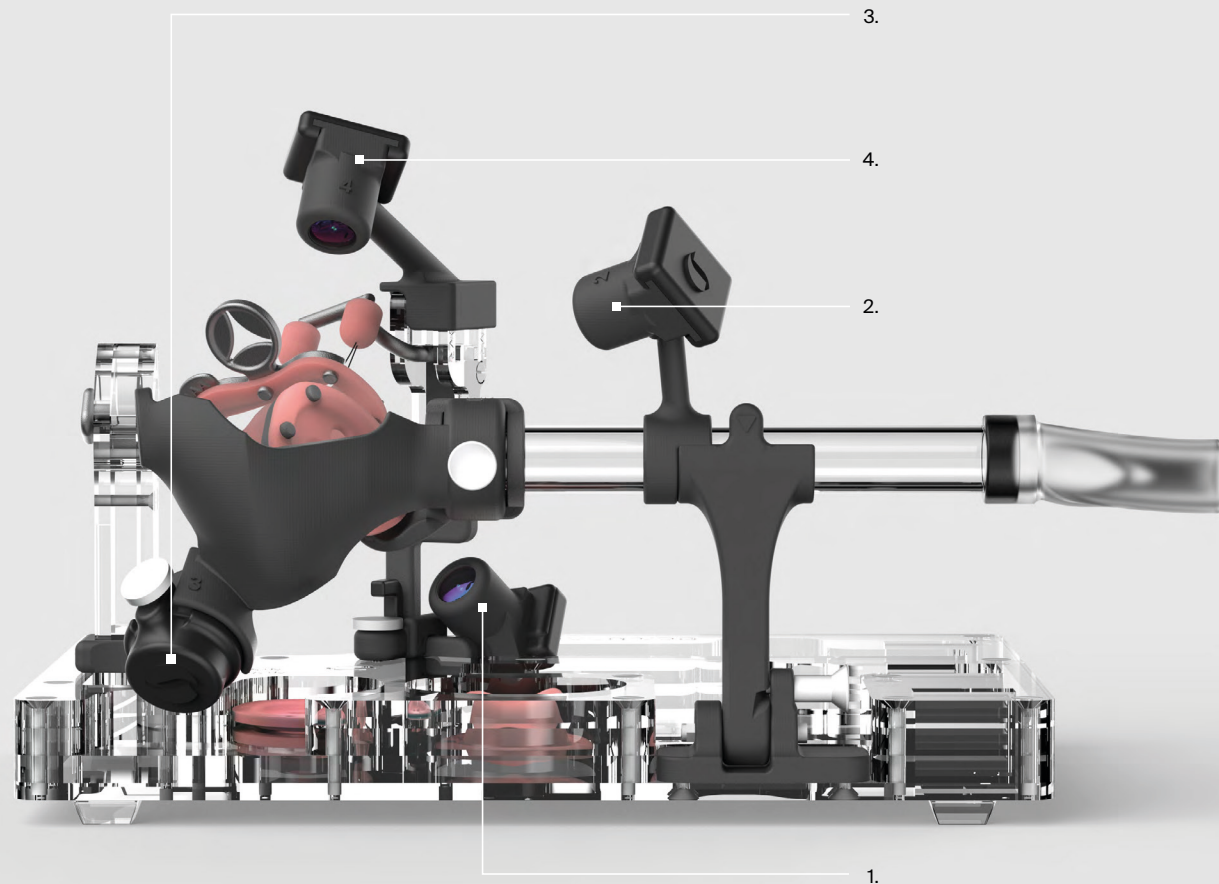
#### Landmarks representing

- Aortic valve
- Left atrial appendage

### SOFT STRUCTURES

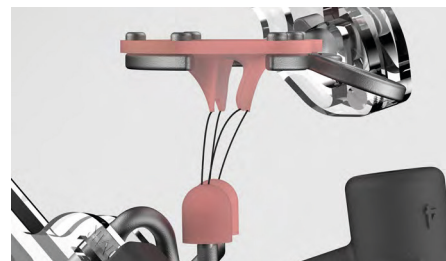
- Papillary muscles with chordae
- Valve leaflets
- Fossa ovalis





## REAL IMAGING CAMERA VIEWS

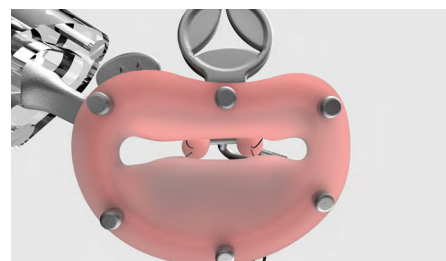
Replicating the implanter's view through four video cameras, positioned to capture the following echo views.



1. Left Ventricular Outflow Tract (LVOT)



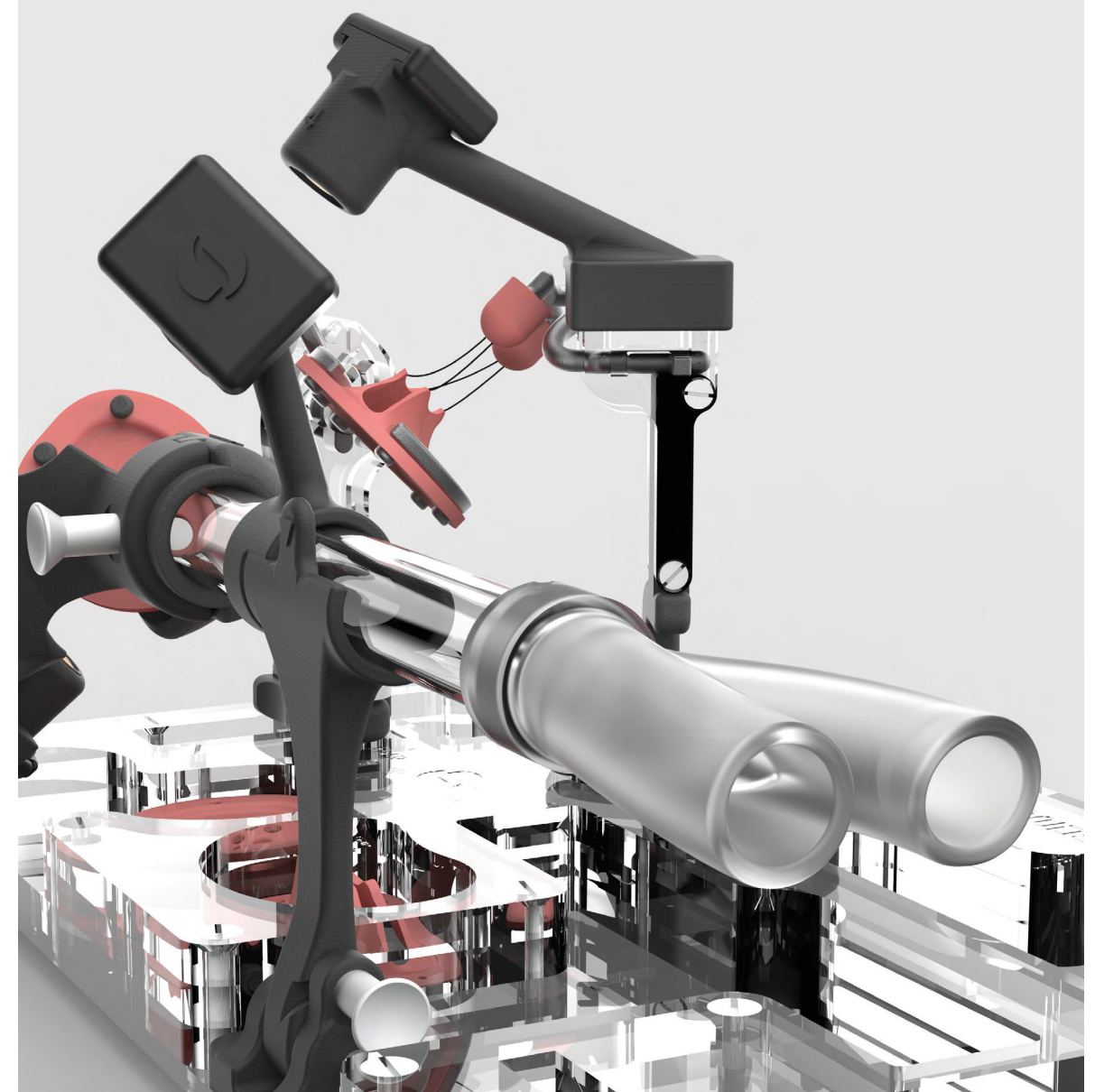
2. Intercommissural (IC)



3. En-Face



4. BICAVAL



## HUMAN GRADE PLATFORM

### MODULAR ANATOMICAL SYSTEM

Combination of soft leaflet structures coupled with basic anatomical references and realistic angles. Based on real patients CT, and 3D echo datasets.

### SIMULATOR COMPONENTS

Promotes understanding of 3D anatomy from 2D displays with integrated video-camera systems and fine hand-eye coordination.

### FOUR PATIENT SCENARIOS

DMR and FMR pathologies.  
Basic - Regular patient geometry.  
Advanced - Challenging patient geometry.

## TECHNICAL FEATURES

### IMAGING CAPABILITIES

Direct vision.  
Four video cameras.  
1x tablet with dedicated simuAPP for visualization, recording and remote training.  
Fluoro compatible.

### IN THE BAG

All fits into: laptop bag  
Total weight: 3kg  
Dimensions: 30x20x8cm

### PLUG AND PLAY

No tools required - full system setup in 2 minutes and ready for your device.



# JOIN THE SIMULANDS REVOLUTION

Our simulator components replicate the characteristics of the human anatomy. The simulators are engineered to reproduce real life haptic interaction of the medical devices within the targeted anatomy, representing true anatomical geometries and trajectories. All of our simulators can be used under real echo and fluroscopic guidance.

## SHIFTING THE PARADIGM

From Patient and Animal testing to platforms for R&D and comprehensive Hands-On procedural training using:

Real Devices

Real Imaging

For the Real Heart Team

SIMULANDS systems designed and validated according to **all relevant ISO normative** requirements of clinical and technical equivalence to the human cardiovascular systems.

Our simulators are used for **human factor testing**, usability and ergonomics and meet required benchmarks of various competent authorities, ethics committees and notified bodies (CE, FDA, MDR).

Manufacturer:

**SIMULANDS Ltd**

Schaffhauserstrasse 611  
8052 Zürich  
Switzerland

DMISB0822

Distribution:

**MedThron LLC**

Sharjah Media City (Shams)  
United Arab Emirates

Get in touch with us  
**+971 52 969 6820**  
**+966 56 285 2013**

**contact@medthron.com**

Find out more on  
**medthron.com**



**MEDTHRON**